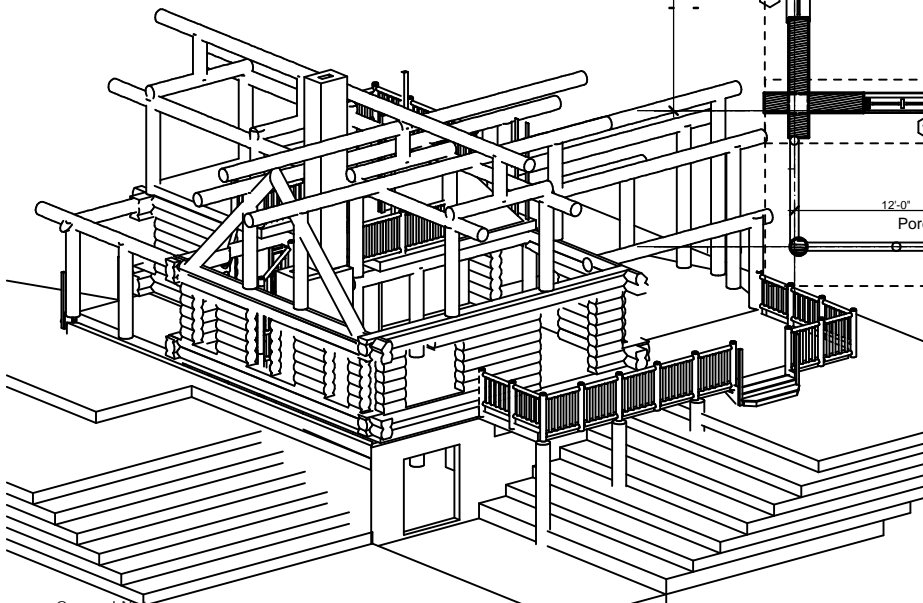
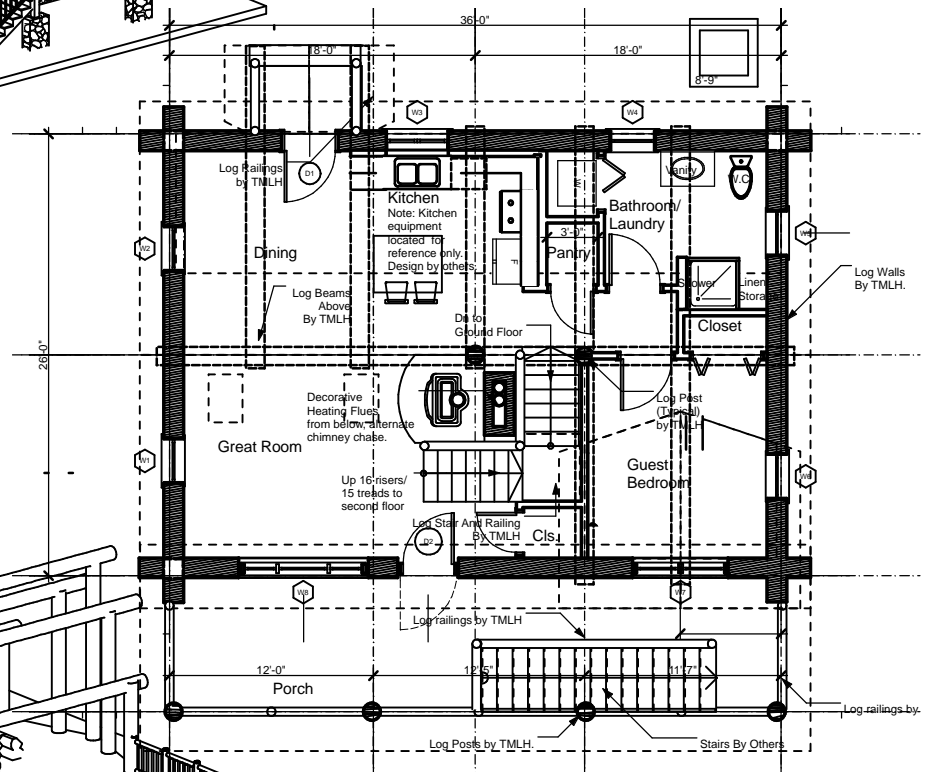
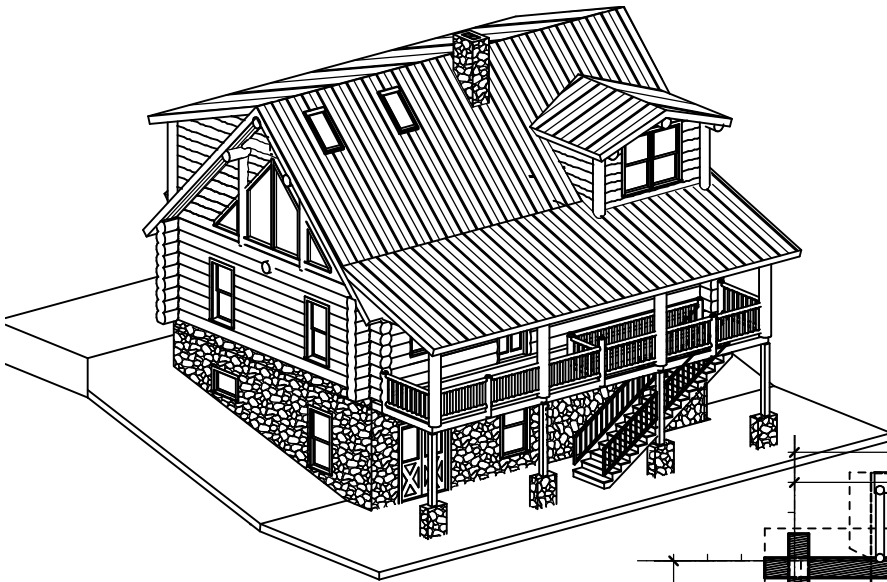


TUCKER MOUNTAIN LOG HOMES

41 Tucker Mountain Road, Sullivan, Maine 04664 Phone: 207 422-3232 Fax: (207) 422-3493
<http://www.tuckermtnloghomes.com>



The Newbury
 Footprint: 936 sf.

General Notes:
 The Owner and Builder are solely responsible for verifying building code compliance, all dimensions, structural integrity and obtaining required permits.

Tucker Mountain Log Homes (TMLH) supplies the log shell and components as outlined in their Contract. Also provided is a set of plans to act as a design guide for the Buyer/Owner & General Contractor.
PROFESSIONAL CERTIFICATION & ENGINEERING SERVICES ARE NOT INCLUDED.

TMLH follows the handcrafting manufacturing standards as outlined by the International Log Builders' Association, PO Box 775, Lumby, BC V0E 2G0. TMLH recommends the buyer, general contractor and/or their agent attend a seminar by TMLH at the office location in Sullivan, Maine, describing materials and construction methods prior to commencement of their project. TMLH details are recommended for use in our homes. It is the responsibility of the buyer and/or their agent to follow these procedures.

DO NOT SCALE THESE DRAWINGS.

This drawing Set may not be reproduced, transmitted, distributed or used in any manner without prior written consent from Tucker Mountain Log Homes.



Handcrafted-Custom
 Designed